



Wethersfield Senior Center News

Social & Youth Services

Wm. J. Pitkin Community Center

30 Greenfield Street, Wethersfield, CT 06109

Tel.: (860) 721-2979 FAX (860) 721-2956

E-mail Address: donna.mattison@wethersfieldct.com

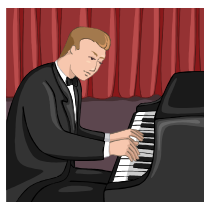
Donna Mattison, Senior Center Coordinator

FEBRUARY 2010 NEWSLETTER

MUSICAL ENTERTAINMENT

The next entertainment program is
Monday, February 1 at 1:00 PM.

The musical entertainment is presented by male vocalist and pianist Brian Gillie. Come and enjoy a selection of the Best Songs of the 20th Century. Refreshments will be provided by Advanced Home Health Care and Ellis Manor. The program is \$2 for Senior Center members and \$4 for others. You do not need to make reservations or have a ticket for this program. Call Donna Mattison at 860.721.2979 if you have questions.





WEATHER CANCELLATIONS

Weather cancellations for the Senior Center will be posted on WFSB-TV Channel 3 First Alert system and Infinity radio station WTIC-AM (1080). Listen or look carefully because sometimes activities are cancelled all day or just for the morning or afternoon. In most instances, activities will be cancelled if the Wethersfield schools are closed. If there is a delayed opening the Center opens at 10 am. If there is an early dismissal afternoon programs may be cancelled. Decisions for Senior Club cancellations (primarily bingo and setback cards) and the Community Café lunch program are made separately.

TRY OUT AN ACTIVITY AT THE SENIOR CENTER

Tuesday morning **Art Classes**;
Monday morning **Line Dancing** ;
Choral Group on the 2nd and 4th
Thursday afternoons; **Wii Bowling**—
League Bowling on Tuesday afternoons
and open bowling on Thursday
afternoons; a **Book Discussion Group**
meets on the **4th Monday** afternoon,
for **Monday, February 22** the book is
The Echo Maker by Richard Powers;
and a **Belly Dancing** class starts again
in the Spring **April & May** on
Thursday
afternoons.

Call Donna Mattison at 860.721.2979
to learn more about these programs or
other activities and find out how you
can be eligible to try out a program at
no cost. Ongoing participation will
require a Senior Center membership of
\$10 for 3 yrs for residents and \$15 for 3
years for others. Some of the programs
have a nominal additional cost.

**INTERESTED IN A HOT, LOW COST
MEAL? CALL 860.721.2955 BETWEEN
10AM-12 NOON FOR A MEAL THE
NEXT DAY AT THE COMMUNITY
CENTER.**

DENTAL HYGIENIST APPOINTMENTS

Persons age 60 or over who have not had routine dental care may be eligible for a free Dental Cleaning and Screening by a hygienist. Appointments are currently available for **March 8 or 10**. This program is made possible with a grant to the Central CT Health District from the North Central Area on Aging. Call Donna Mattison at 860.721.2979 for more information or to schedule an appointment.

CRT ENERGY ASSISTANCE

Assistance in applying for help with fuel bills for the 09/10 heating season is available by calling 860.721.2977. The Energy Assistance program is for low income households. Those who heat primarily with oil will be given priority appointments.

Households may be eligible if the annual gross income is \$30,485 or below for an individual or \$39,865 for a couple. As the household size increases, the income limit goes up. Assets are considered and renters with assets more than \$7,000 and homeowner's with assets more than \$10,000 may not be eligible.

You must provide documentation of all current (within the last 30 days) income; examples of income are social security, pensions, interest or dividends from any source. You also must provide copies of bills for primary and secondary source of heat, a copy of your mortgage payment or rent receipt and written proof of all assets (savings or checking accounts, IRA's stocks, bonds, CD's, etc.). Those over sixty must provide proof of age and persons with a disability must provide verification of a disability. (You can call Social Security and ask for a TPQY form stating that you are a person with a disability and obtain proof of the amount of your current checks.) New applicants must provide photo identification for the head of household and Social Security cards for all household members.

CENSUS TIME NEARS—BE SURE YOUR TAKER IS THE REAL DEAL

(Reprinted from the Hartford Courant)

Residents should be "cooperative but careful" about information given to U.S. Census workers, the Connecticut Better Business Bureau warns. According to the Bureau, some people pose as census takers to obtain unwarranted personal information. Legitimate census takers will have a badge, hand-held device, canvas bag and a confidentiality notice with them. The Bureau said census takers will "never ask for personal financial or Social Security information". There will also be no contact by e-mail. More information is available at www.census.gov.

YOUR ADS

UPCOMING HEALTH PROGRAMS

Blood Sugar Levels Checked-This free service is available on **Tues. 2/9** Appointments are required. Call 860.721.2818.

Free Blood Pressure Screenings-Scheduled for 10:30-11:30AM the mornings of **2/3, 2/10, 2/17, 2/24**. Area agencies offering this service are Patients Choice Home Care, Wethersfield Health Care Center and Maple-view Manor.

Prescription Counseling-Wed. **2/24**-Schedule a free individual consultation with a pharmacist by calling 860.721.2818.

Foot Care Clinic-Cleaning, filing, trimming of nails, reducing corns or calluses for seniors. No Diabetics. To schedule and determine the fee call 860.721.2818.

Hearing Screening-On **Mon 3/15** a specialist from the Hearing Wellness Center provides a free screening, cleaning/testing of any type hearing aid. Call 860.721.2979 to schedule.

FOOD BANK DONATIONS NEEDED

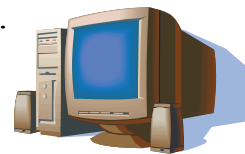
The economic situation over the past several months has increased the use of the Food Bank at the Social & Youth Services Office. All donations will be accepted; however, the greatest need is for: cereal, canned fruits, rice, boxed potatoes, granola or similar type bars, tuna fish or other canned meats and pasta & pasta sauce.

Donations can be brought to the S&YS Office at the lower level of the Town Hall at 505 Silas Deane Highway between 8 AM and 4:30 PM.

YOUR

COMPUTER REGISTRATION

The next date is **Monday, February 8** from 1-3 pm. You can learn about scheduled computer classes, fees and membership requirements and, if interested, register for a course. You can pick up a listing with dates and cost for courses that are currently scheduled from through June 2010. Courses scheduled for the next session are: Computer Fundamentals, Using Software Applications, Graphics, and Envelopes & Labels. In addition the following workshops are scheduled: *Museum Tour Using the Web; Keyboard Shortcuts; Exploring Tutorials and the Power of Google*. The workshops are \$5 each with no membership fees required.



FEBRUARY MOBILE FOODSHARE

Dates in January are on **Wednesdays: Feb 10 and Feb 24** from 9:30 to 10:30 am. Wethersfield Social & Youth Services & Wethersfield Housing Authority sponsor this food distribution at 60 Lancaster Rd. A variety of fresh fruits & vegetables are available to those with limited income. If you are not already registered you will need to complete one form. Call 860.721.2977, Marita Eppler, for more information.

ADS

WETHERSFIELD SENIORS CLUB

Officers are: President-Carol Tedone, Vice President-Grace Piencikowski, Secretary-Pat Schmid, Treasurer-Anthony Diana. This active group of Wethersfield seniors provide a variety of programs at the Community Center. When applicable a contact person for the activity is noted.

- ◇ Mondays: 10:30 am-12 pm-Needlework Crafts in Room S-2-contact Pat Schmid@860.643.5683
- ◇ Wednesdays: 10 am- 11:30 am-New memberships or renewals- Banquet Room
- ◇ Wednesdays: 12:30 pm-Bingo-Banquet Rm
- ◇ Thursdays: 1 pm-Duplicate Bridge-contact Everett Costa@860.563.0400
- ◇ Fridays: 12:15 pm-Setback Cards-Banquet Room-contact Joe Mehan @860.258.0662
- ◇ Bowling: Monday afternoon league-contact Joe Marinello@563.7064 & Thursday morning league- contact John or Linda Forand@860.529.6781
- ◇ Golf League: Contact Ted Jachyn@860.529.6710 or Jim McNamara @860.563.4586
- ◇ Trip information: Contact Barbara Higbee@860.529.9848

SAFE DRIVING CLASS



An AARP Safe Driving Class is scheduled at the Senior Center for **Wednesday, April 21** and **Thursday, April 22**. The program is 8:30 am to 12:30 pm; participants must attend both days. Insurance discounts now apply to those over 60 years old who complete this course. Call 860.721.2979 to register. Cost is \$12 per person for AARP members and \$14 for others.

REVISIONS TO THE MEDICARE SAVINGS PROGRAM

If you are below a certain monthly income \$2091 for individuals and \$2816 for couples, you may apply for State assistance to pay for your Medicare Part B premium or your Medicare co-pays and deductibles in addition to your Part B premium. If you are eligible for this program, you will also qualify for Medicare's Low Income Subsidy program to help pay for Medicare Part D Prescription premiums and reduced co-payments for prescriptions.

GET FREE HELP WITH YOUR TAX RETURN



AARP Tax-Aide, a free program, provides income tax preparation assistance for low and middle-income taxpayers of all ages, with special attention to those 60 and older. To schedule an appointment with a certified Tax-Aide counselor call the Wethersfield Social & Youth Services office at 860.721.2977. If married, both husband and wife should be present during an income tax counseling session. Taxpayers must bring all information and documents received that apply to their 2009 income taxes including copies of all 2009 state/federal income tax forms; all income reports (1099 Forms) received for pensions, social security, interest/dividends, wages or any other income; all documents that relate to deductible expenses; social security numbers and identification for all household members.