

Walking Tour of Agricultural, Maritime, & Revolutionary Sites In Wethersfield's Historic District.

In this color-coded map and key, Agricultural sites are Green, Maritime sites are Blue, and Revolutionary sites are Red. The map identifies the location and street address; the key includes some information about each site.

Broad Street

- 35 Stephen Willard, Jr. (1770-1849), Farmer
- 49 Stephen Willard, Sr. (1740-1817), Farmer
Thomas Willard (1816-1876), Farmer
- 56 Captain Charles Bulkeley, Privateer
Captain Charles Bulkeley, Jr., Captain
- 65 Edward W. Willard, Sr. (1883-1958), Treasurer and
President, Comstock, Ferre & Co.
- 84 Edward W. Willard, Jr. (1911-1986), Comstock,
Ferre & Co.
- 138 Colonel John Chester, Militia Officer
- 165 James R. Anderson (1842-1931), James W. Anderson
(1893-1969), David Anderson, Anderson Farms
- 185 Silas W. Robbins (1822-?), Partner in Johnson &
Robbins Seed Co. Breeder of Jersey Dairy Cows
- 188 William Morris (1858 -1945), John Morris (1904-1977)
Frank Morris, Morris Farms (farm outlined behind 188)
- 226 Ezekiel Williams, Sheriff, Commissioner of Prisoners
- 241 Thomas Newson, Privateer
- 249 Othniel Williams, Army Officer

Center Street

- 67 Frank S. Hart (1887-1976), Partner, Charles C. Hart Seed
Co.
- 81 Everett H. Hart (1894-1993), Partner, Charles C. Hart
Seed Co.

Church Street

- 18 Henry Ferre Store

Garden Street

- 25 Colonel John Chester, Militia Officer
- 49 Captain Richard Bunce, Sea Captain, British captive,
War of 1812

Hartford Avenue

- 47 Bruce McCue, McCue Gardens
- 56 William Meggat (1835-1919), Partner, Wolcott &
Meggat, Seed Growers
- 88 Captain John Francis, Jr., Sea Captain
- 220 Captain Gideon Welles, Ship Master
- 270 Captain Charles Francis, Jr., Captain
- 408 Captain Josiah Buck, Ship Master
- 411 Daniel Buck, Jr., Buck's Transportation Line in New
York/Philadelphia Trade

Main Street

- 30 Stephen F. Willard (1851-1924), Director and President,
Comstock, Ferre & Co.
- 136 Wethersfield Grange 1898
- 133 Ashbel Wright, Militiaman
- 161 Edward Robbins (1824-1893), Partner in Johnson &
Robbins Seed Co.
- 203 Silas Deane, Representative, Congressman, Diplomat.
Elizabeth Deane, Hostess to General Washington
- 211 Joseph Webb, Jr., Deputy Sheriff, Provisioner
Abigail Webb, Hostess to Gen. Washington
Samuel Webb, Officer, Gen. Washington's aide-de-
camp, Prisoner of War for 3 years
John Webb, Dragoon Officer, Society of Cincinnati
- 212 Captain John Hurlbut, Ship Master

Main Street (continued)

- 212 Captain James Hurlbut, British Prisoner, War of 1812
- 250 The 1761-4 Meeting House
- 249 James L. Belden (1774-1847), Founder of Wethersfield
Garden Seed Co.
- 263 Comstock, Ferre & Co., established 1820, the oldest
American seed company in continuous existence.
- 290 Justus Riley, Sea Captain, Ship-BUILDER, Owner of over 12
Ships,
- 304 Butler, Strong & Co. 1845, Johnson Robbins & Co. c. 1850,
Charles C. Hart Seed Co 1892
- 307 Captain Otis Stillman, Sea Captain
- 319 Francis Bulkeley, Ship Master
- 320 Richard Robbins (1826-1895), Partner in Johnson &
Robbins Seed Co.
- 330 Allyn Stillman, Soldier, Blockade Runner, Man-o'-War
Captain
- 335 Charles C. Hart (1862-1938), Founder of Charles C. Hart
Seed Co.
- 336 William G. Hart (1892-1985) ,Partner in Charles C. Hart
Seed Co.
- 340 Captain Timothy Stillman, Ship Master
- 357 Captain Daniel Francis, Ship Master
Captain John Francis, Ship Master
- 366 Ebenezer Talcott, Militiaman
- 373 Henry Ferre, Partner in Comstock, Ferre & Co.
- 400 Thomas Belden, Militia Officer, Army Officer
Ezekiel Porter Belden, Dragoon Officer, Society of
Cincinnati
- 453 William Griswold, Militiaman, War Casualty
- 461 Josiah W. Griswold, Grower of Grape Vines & Small Fruits
- 468 Nathaniel Stillman, Jr., Officer, General Washington's Life
Guards
- 471 Captain Caleb, Timothy, Jonathan, and Timothy Griswold,
Seamen
- 481 John Blackleach, Jr., Ship Owner
- 484 Humphrey Woodhouse, Shipbuilder
Captain Humphrey Woodhouse, Jr., Ship Master and
Coastal Pilot
- 493 Samuel Hanmer, Militiaman
- 496 Francis Hanmer, Jr., Militia Officer
- 504 John Hanmer, Militia Officer
- 505 Captain Samuel Lattimer, Wharf Owner
- 520 Samuel Boardman, Soldier, Manufacturer of salt-petre
- 538 Titus Buck, Militiaman, War Casualty
David Buck, Militiaman
- * Cove Warehouse, Maritime Museum

Marsh Street

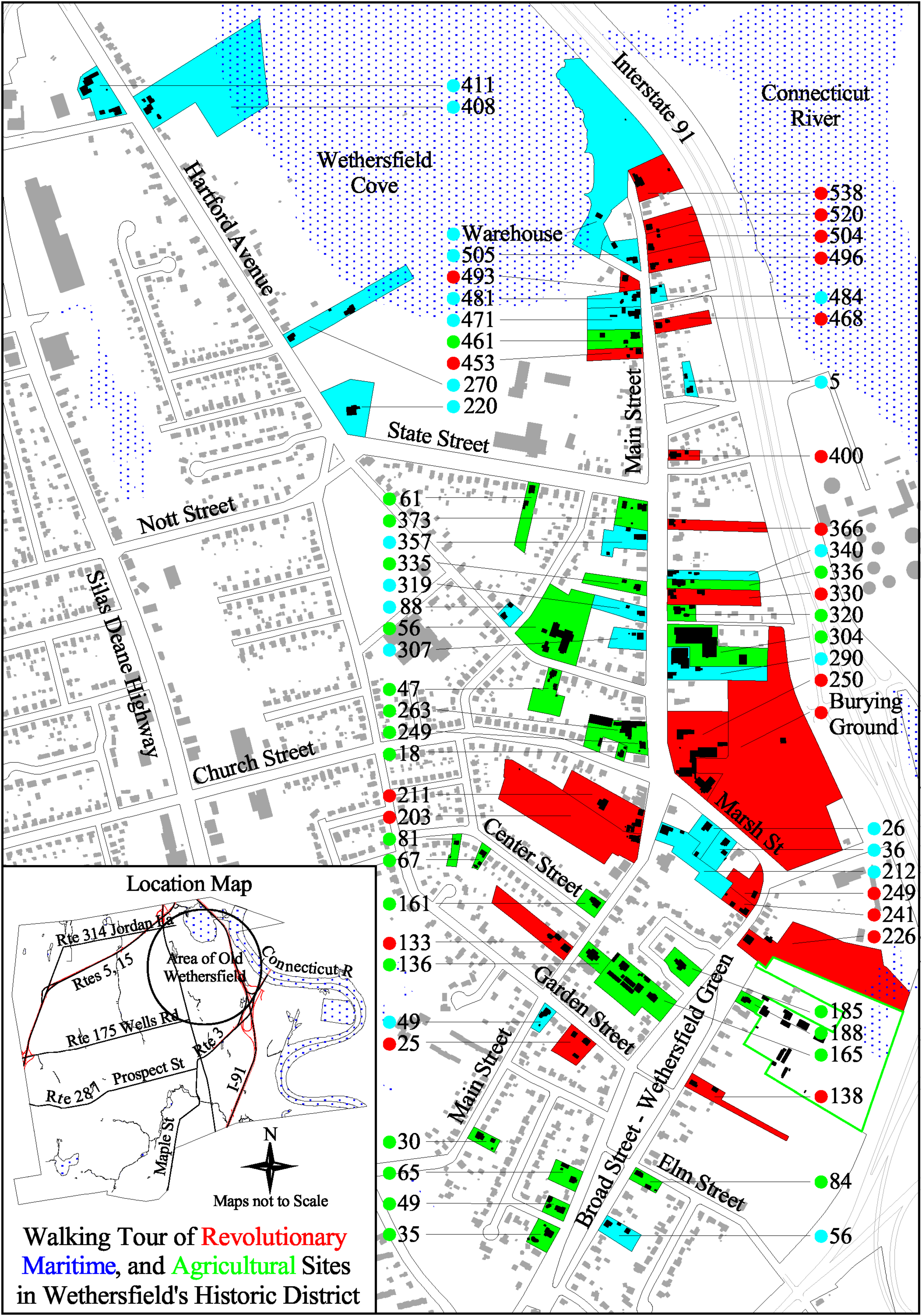
- * Ancient Burying Ground
- 26 Captain Gershom Nott, Sea Captain
- 36 Peter Burnham, Sea Captain
Captain John Burnham, Ship Master

River Road

- 5 George, Samuel, Henry Woodhouse, Sailors

State Street

- 61 Charles C. Hart (1862-1938), Founder, Charles C. Hart
Seed Co.



411
408

Connecticut River

Wethersfield Cove

Warehouse
505
493
481
471
461
453
270
220

538
520
504
496
484
468

State Street

Main Street

5
400

Nott Street

61
373
357
335
319
88
56
307

366
340
336
330
320
304
290
250

Silas Deane Highway

Church Street

47
263
249
18

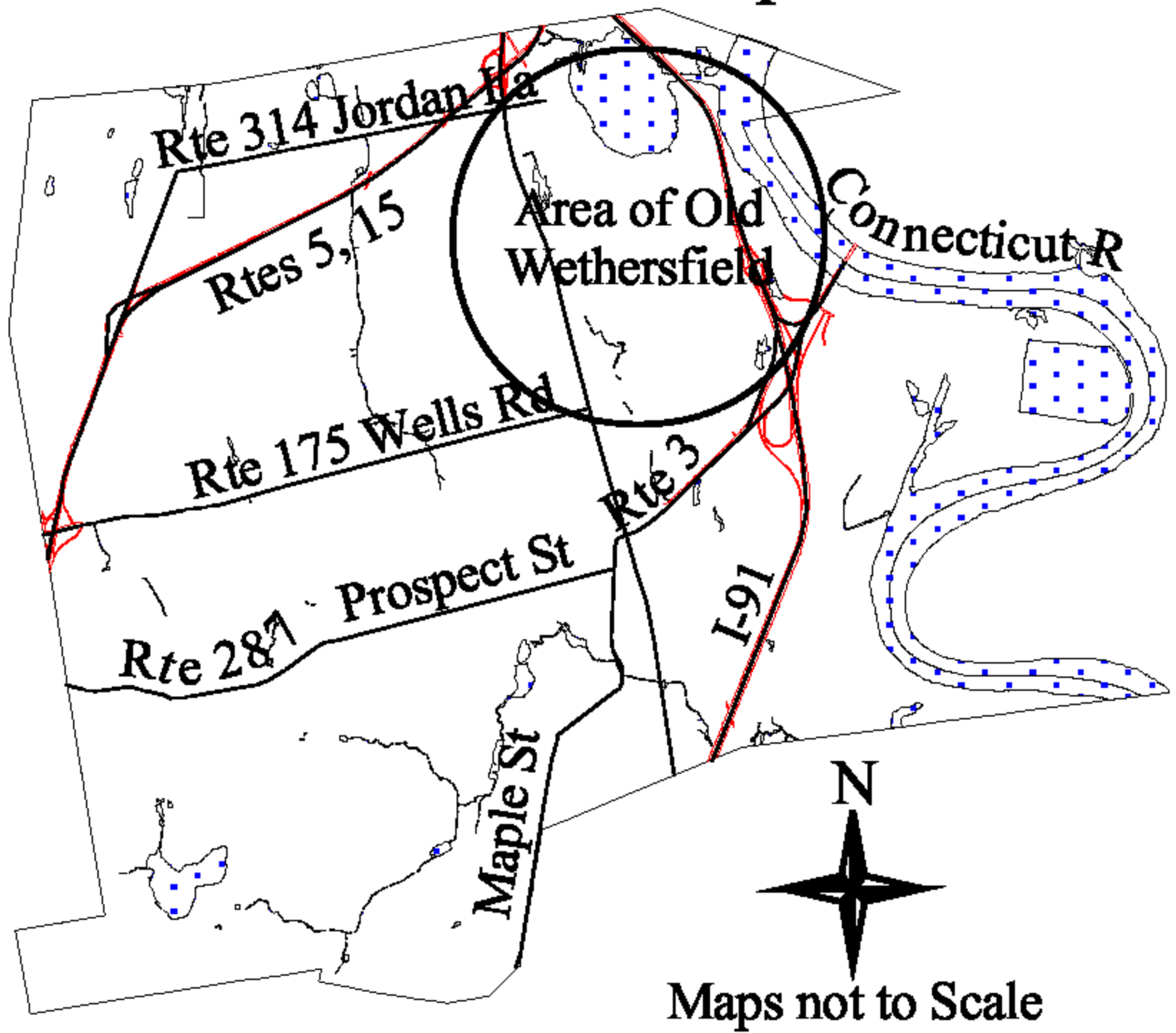
Burying Ground

Center Street

Marsh St

26
36
212
249
241
226

Location Map



211
203
81
67

161

133
136

49
25

Center Street

Garden Street

30
65
49
35

185
188
165
138

Main Street

Broad Street - Wethersfield Green

Elm Street

84
56

N
Maps not to Scale

Walking Tour of **Revolutionary Maritime**, and **Agricultural** Sites in Wethersfield's Historic District